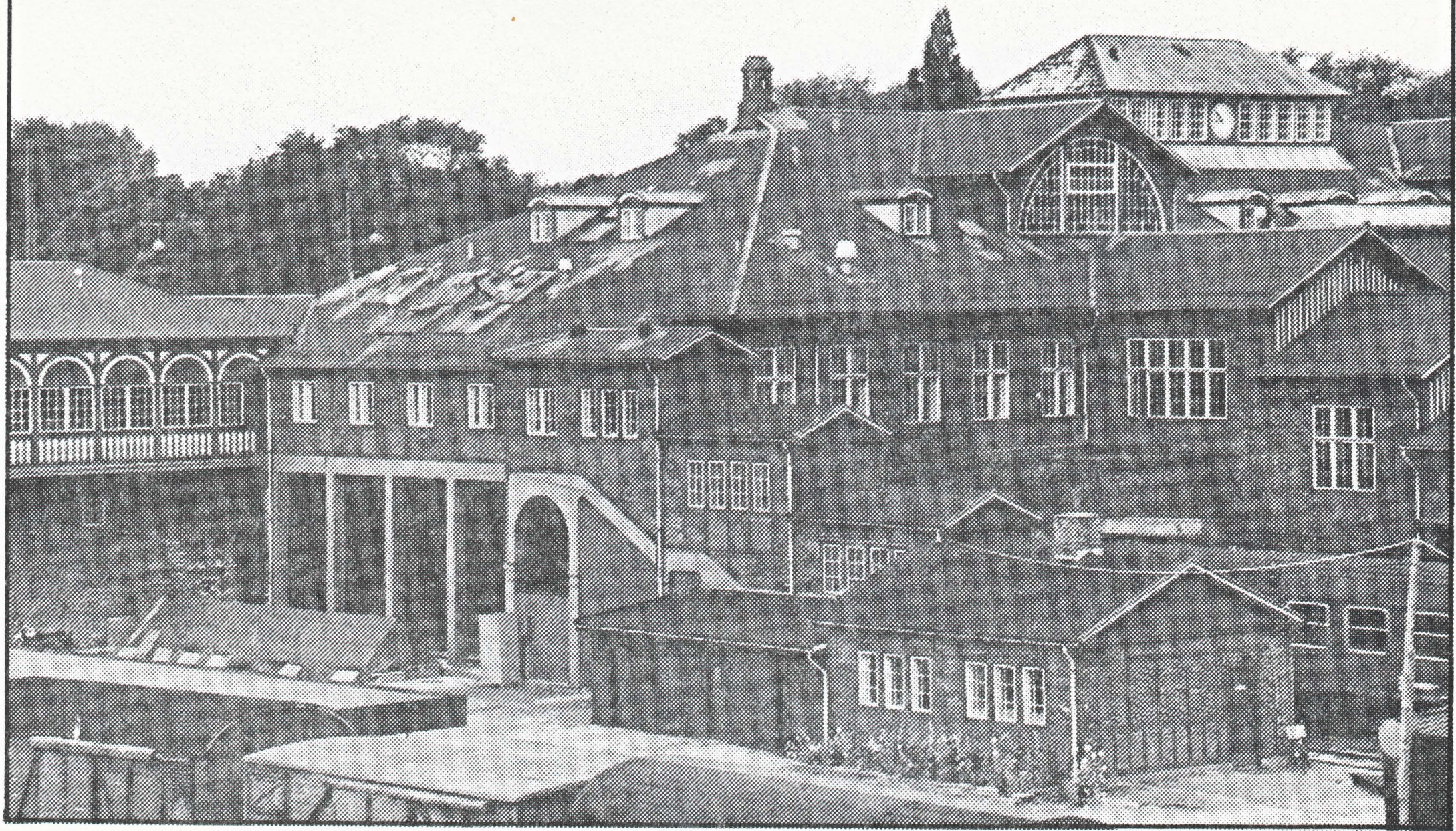


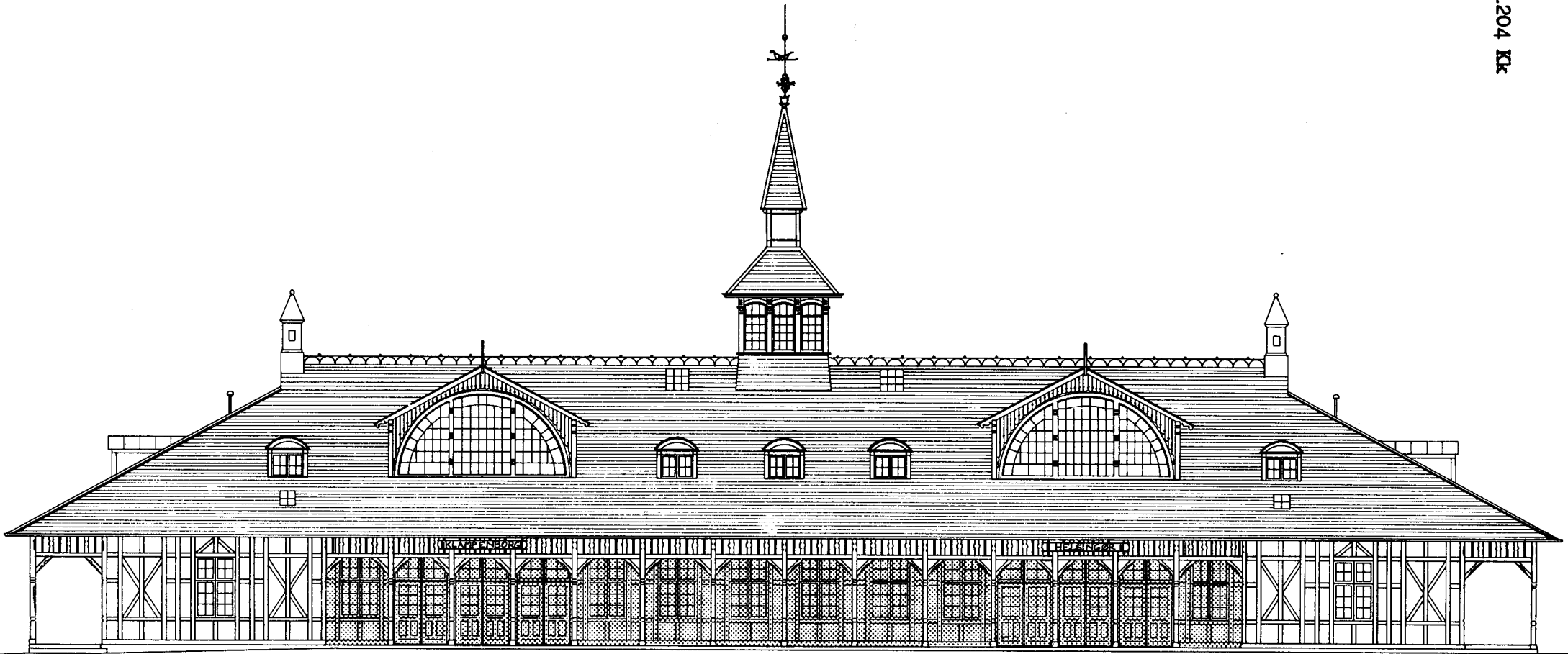


Hovedbygningen

1903

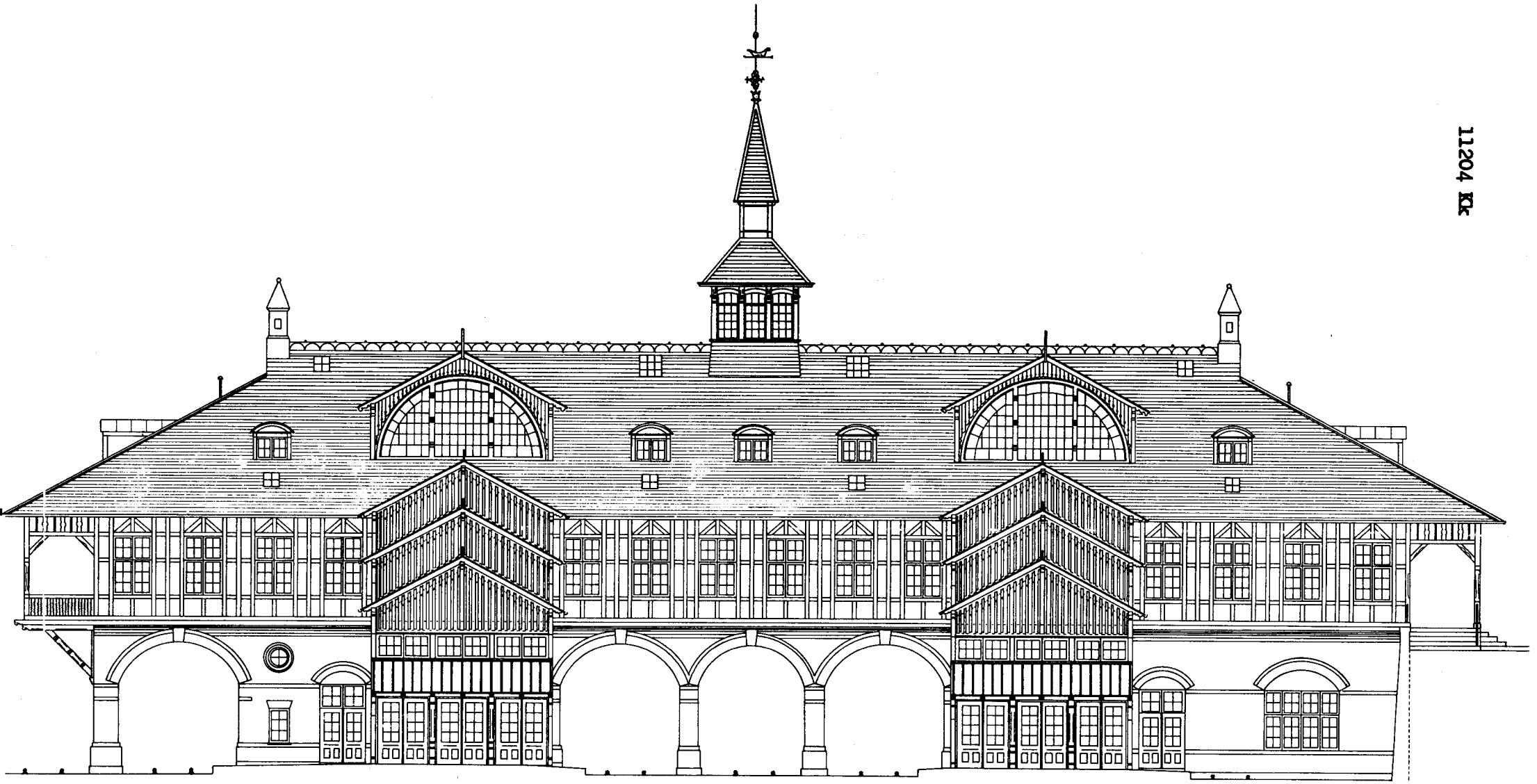


Trappehus ved hovedbygningens østfacade



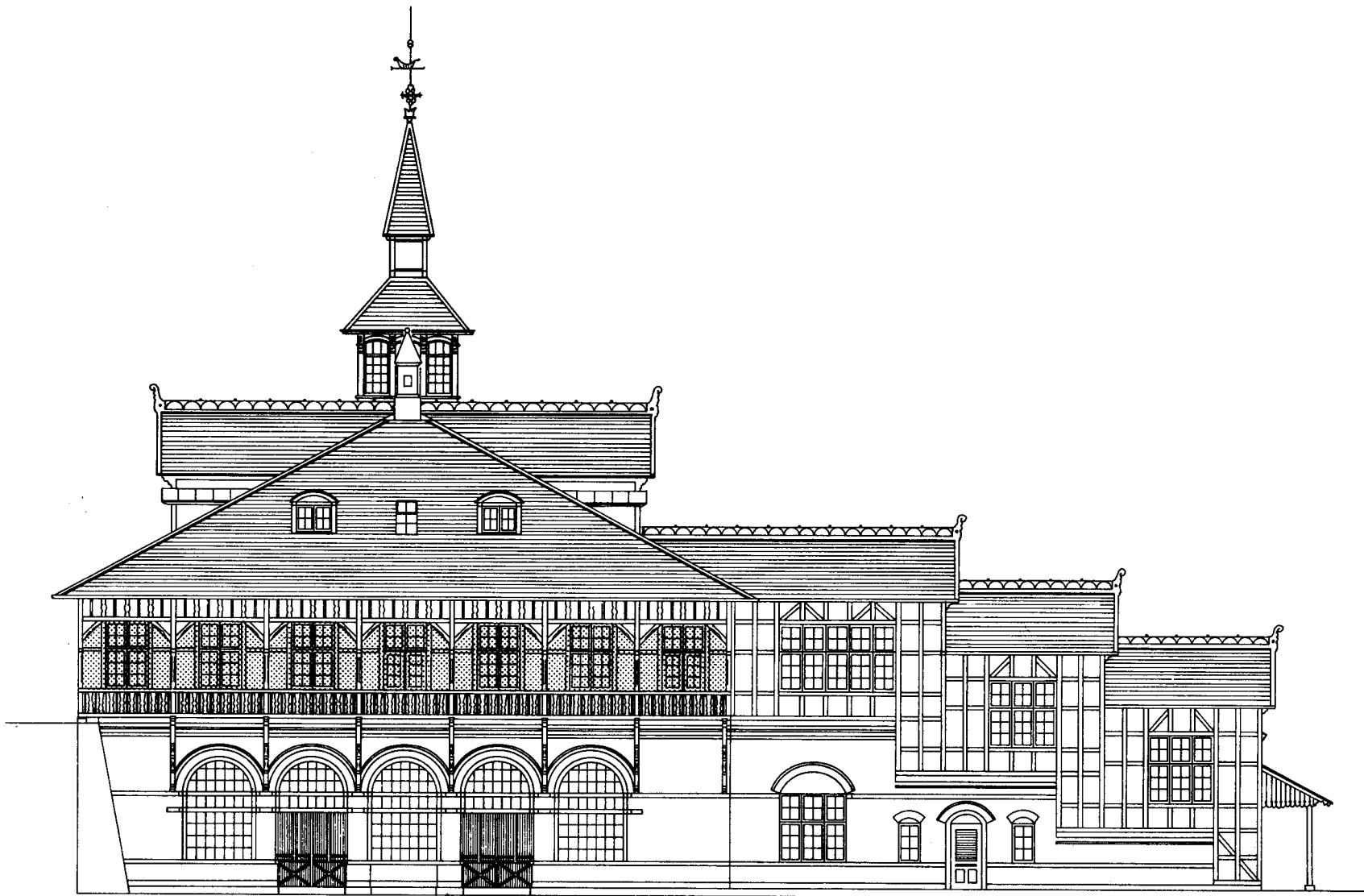
Facade mod syd 1897

mål 1:200



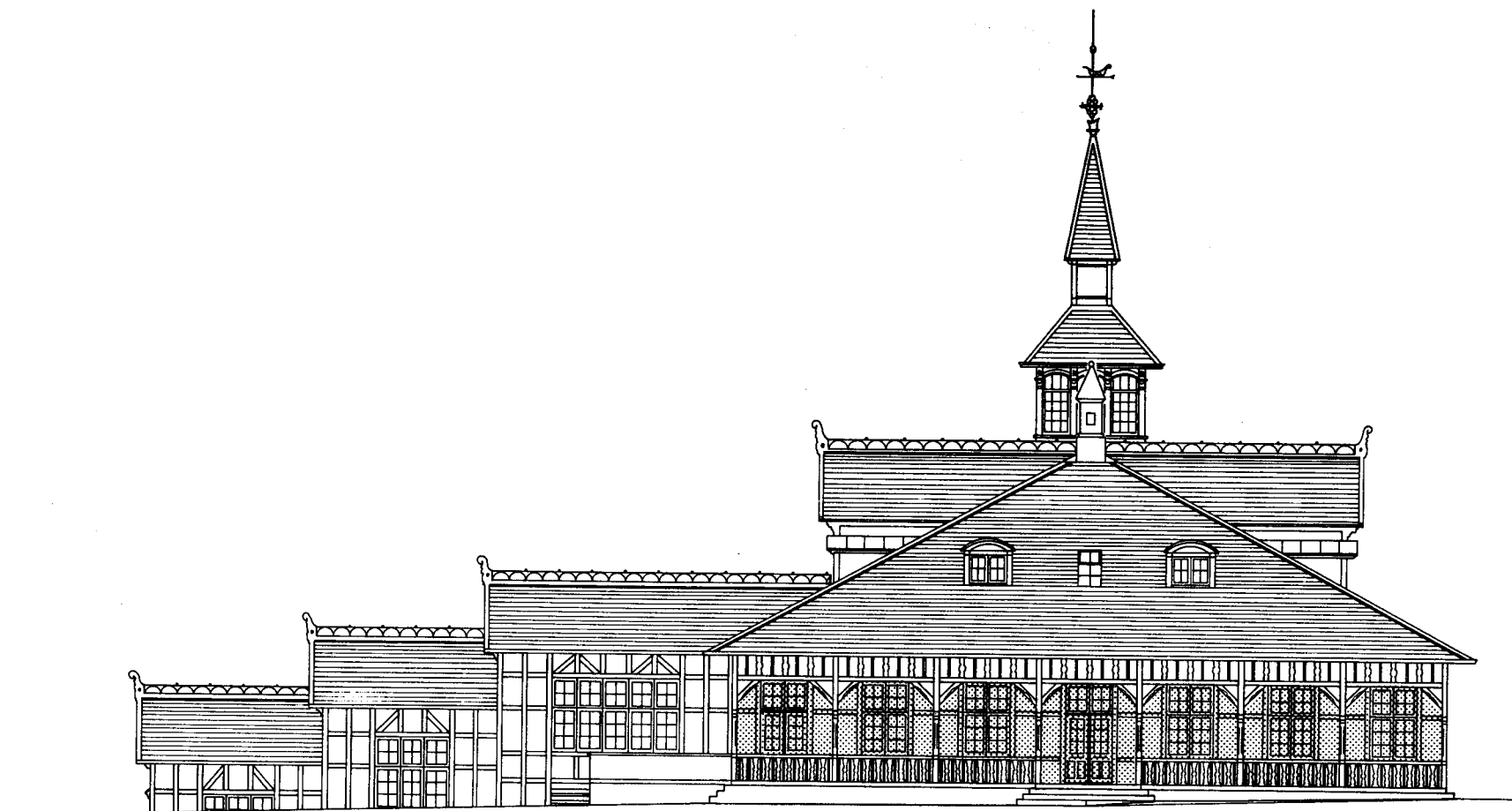
Facade mod nord 1897

mål 1:200



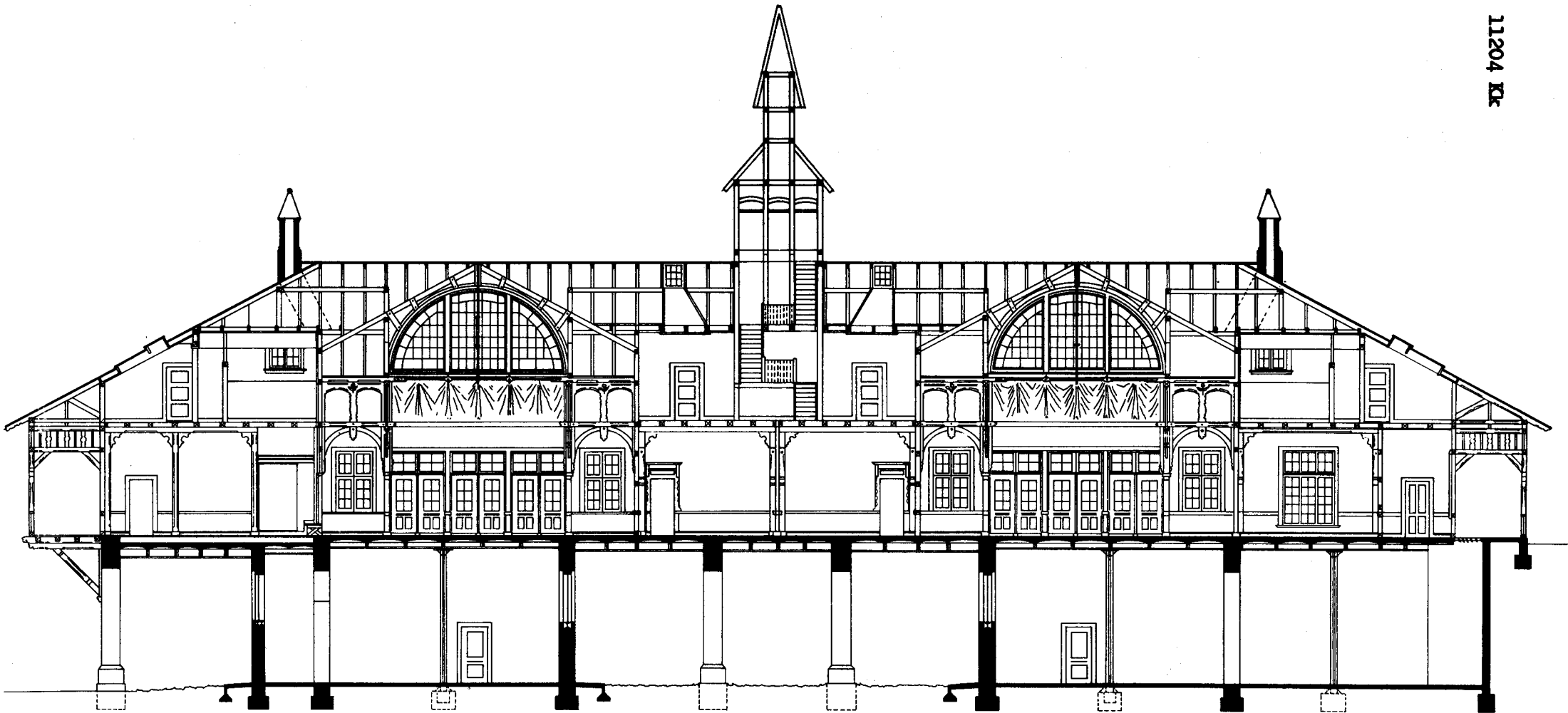
Facade mod øst 1897

mål 1:200

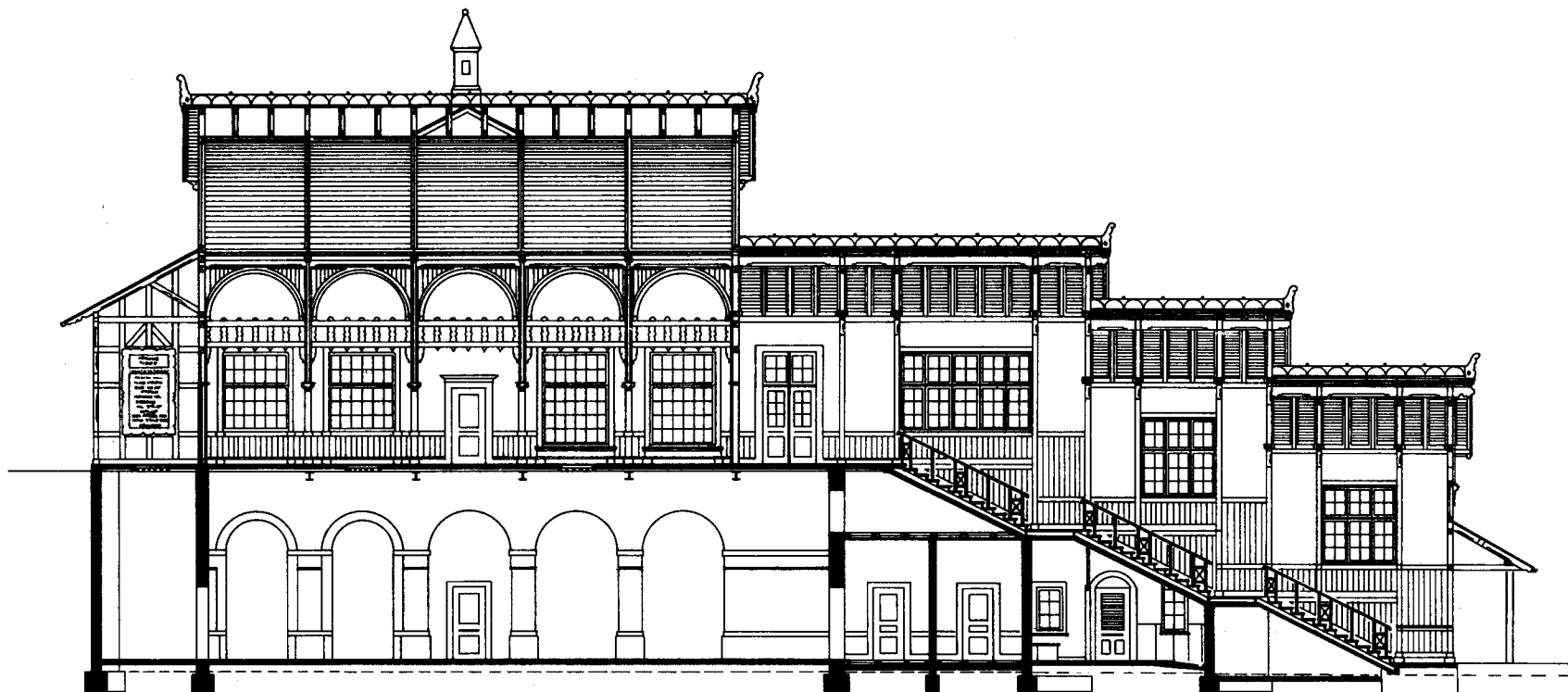


Facade mod vest 1897
mål 1:200

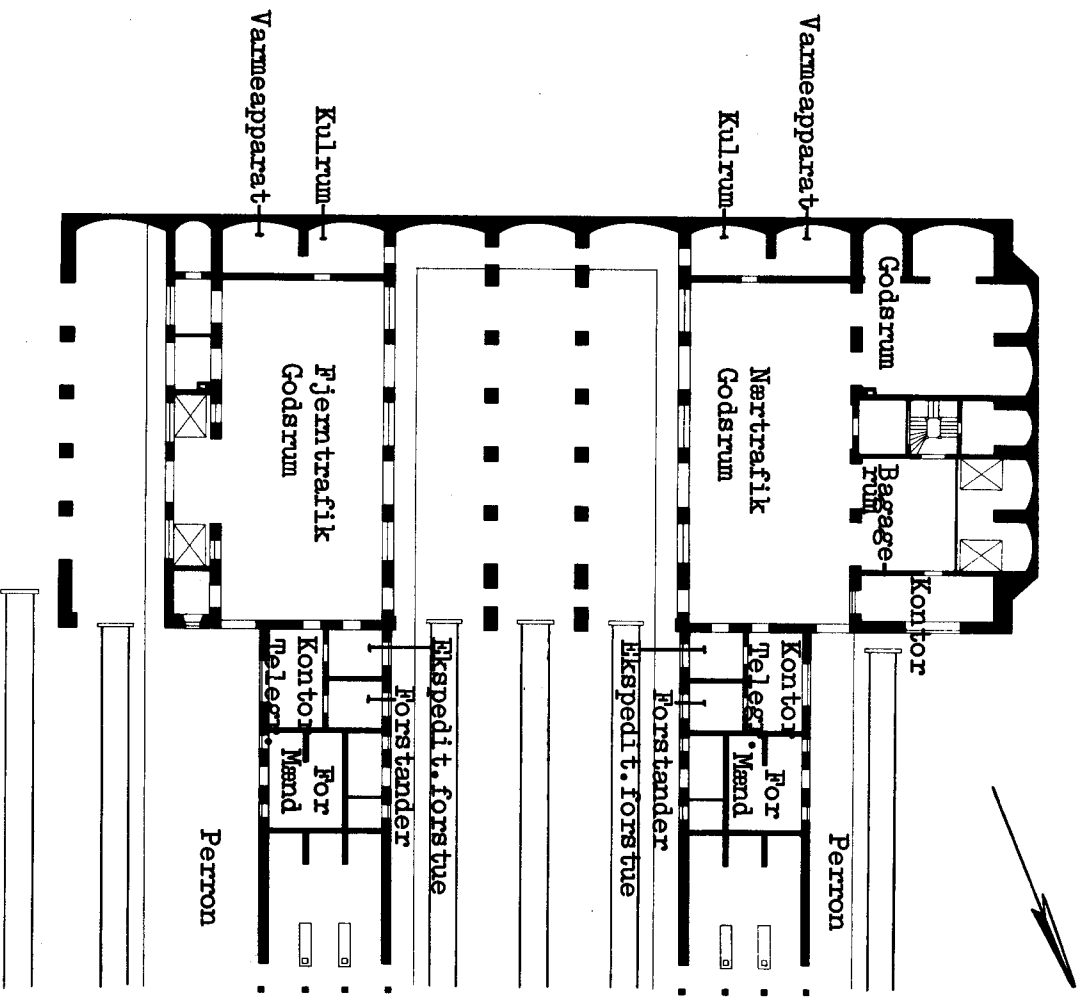
11204 KR



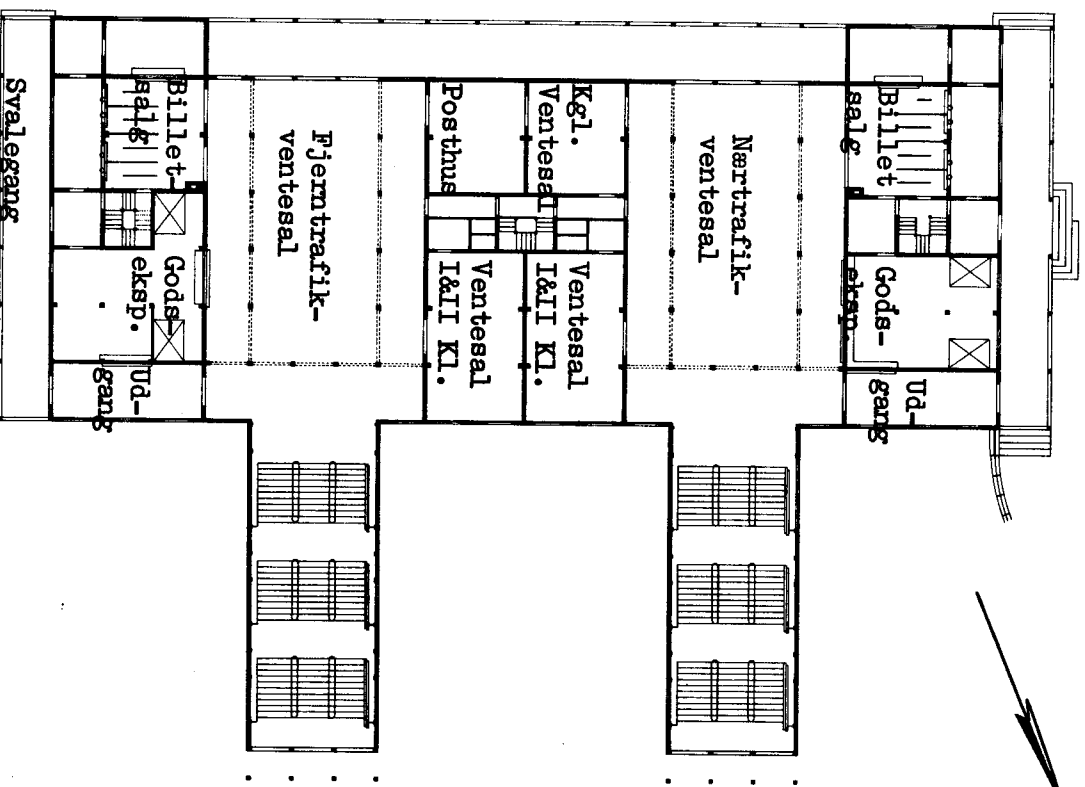
Längdesnit 1897
mål 1:200



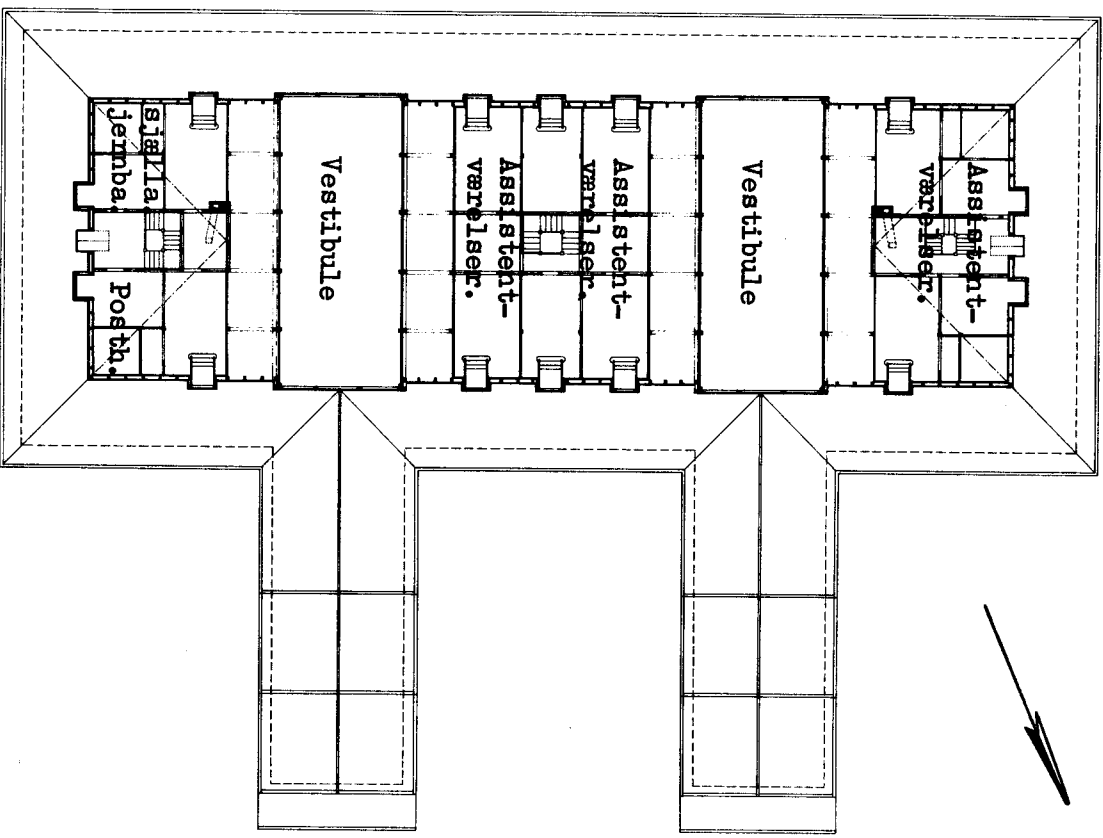
Tværsnit 1897
mål 1:200



Plan, perronetagen 1897
Mål 1:400



Plan, Gadeetagen 1897
M&I 1:400



Plan, Lofteetagen 1897
Mål 1:400